

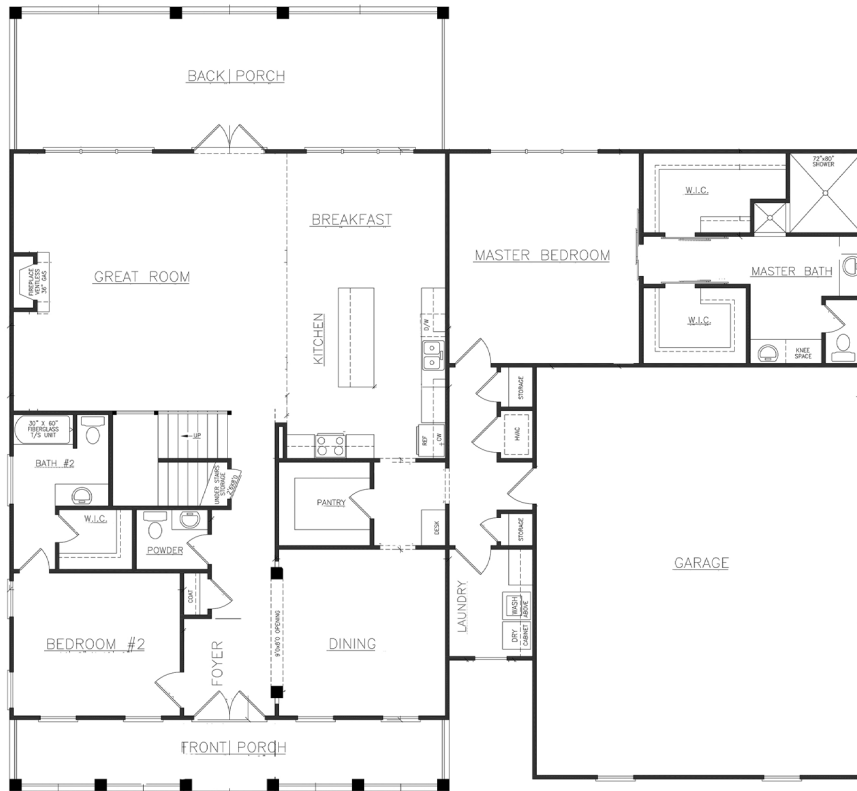
# The Ashley



4 Bedroom | 4 Bath | 3 Car Garage | 3350 Sq. Ft.

# The Ashley

First Floor



FIRST FLOOR PLAN

This perfectly designed two-story home by Bent Pine Construction features an inviting front porch. This welcoming front porch leads to the grand entryway with 11' ceilings. A study is located to the right and the formal Dining Room is to the left opening into the Great Room. The open floor plan allows for comfortable flow and space for everyone.

The Kitchen features a large quartz island with double cabinetry, custom designed cabinet layout with double-oven, cooktop and custom hood. The large walk-in pantry has space for everything and could even serve as an appliance garage.

The Master Suite in this home is an envy with a foyer entrance leading to the large Bedroom with tray ceilings, spacious His and Hers closets and a spa-like Bath with large tile Shower with benches on each side, multiple shower heads and rainshower features.

The two additional Bedrooms each have their own private full bath. A half bath is located off the Great Room for guests. This home has a large Laundry Room with plenty of space, a Laundry Sink and custom cabinetry, making it beautiful and functional.

The expansive back porch of this home is perfect for relaxing or entertaining with the Summer Kitchen. The three car side entry garage offers an additional storage area and walk-up attic stairs.

Second Floor



**Bedrooms: 4**

**Baths: 4**

**Garage: 3**

**Total Sq. Ft: 3350**

Floorplans and elevations are subject to change. Images may include optional features. Included features may vary by community. Floorplan reflects typical approximate dimensions. Floorplan may vary based on selected elevation. Fielding Homes reserves the right to make changes without notice. Elevation images are for illustrative purposes only.