

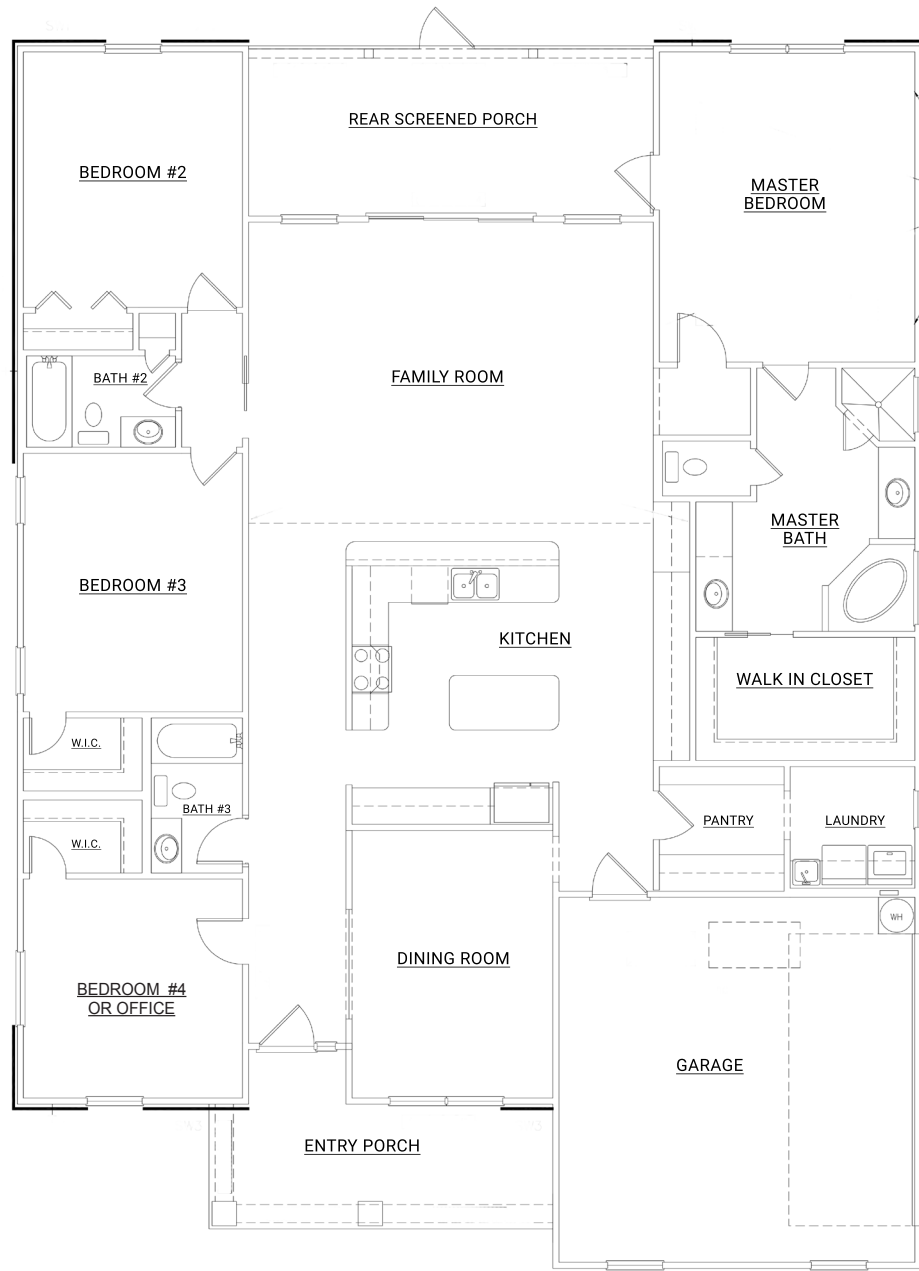
The Allie



Rendering provided as example only. Final elevations, specifications, and materials will vary.

4 Bedroom | 3 Bath | 2 Car Garage | 2423 Sq. Ft.

The Allie



The builder has thought of everything for this home! A beautiful design inside and out starting at the welcoming Front Porch. The home has a Greeting Foyer with a layout perfect to match the owner's lifestyle. Designed with 3 Bedrooms to the right. The back bedroom is perfect for a guest suite with it's own bath, or an office.

The Great Room is well designated living space, with options like coffered ceilings and built in bookcases or entertainment wall. The Kitchen Island is oversized with seating and well spaced for entertaining. Plenty of cabinetry and counter space and a separate Butlers Pantry leading to the large Laundry Room.

The Dining Room is located at the front of the home to allow for plenty of entertaining space. The sliding glass doors lead to the Patio that serves as an extension of the home - great place for a summer kitchen and outdoor bar.

The Master Suite features a spacious Bedroom with access to the Porch, large closets and spa-like Master Bath. His and Hers vanities are separated by a soaking tub and large walk-in shower with multiple shower heads and seating bench.

The large Garage area has space for everything, including walk-up attic stairs.

Bedrooms: 4

Baths: 3

Garage: 2

Total Sq. Ft: 2423

Floorplans and elevations are subject to change. Images may include optional features. Included features may vary by community. Floorplan reflects typical approximate dimensions. Floorplan may vary based on selected elevation. Fielding Homes reserves the right to make changes without notice. Elevation images are for illustrative purposes only.